

Black Box

At Main Street Landing

Technical Information Packet

2022-2023 Season

Effective September 1, 2022

60 Lake Street

Burlington, Vermont 05401

Directors Office 802-540-3018

Contents

- A. GENERAL INFORMATION
- B. STAGE SPECIFICATIONS
- C. SOFT GOODS
- D. SOUND
- E. DRESSING ROOM & PERFORMER SUPPORT
- F. ELECTRICAL AND LIGHTING
- G. REP PLOT & GRID/CIRCUIT LAYOUT
- H. Sound and Lighting instructions

A. General Information

The Black Box a classic black box style theater located on the 3rd floor at the Lake & College Building.

- Maximum capacity per fire code is 220, or 200 with seating risers in place. See seating charts in separate seating packet for options. During the pandemic, capacity is reduced to a max of 100.
- The theater is located at 60 Lake Street in downtown Burlington, Vermont. It is accessible from Exit 14-W from I-89 or via Vermont Route 7.
- There are two loading accesses. One is through the first floor door on Lake Street and take the elevator to the third floor. The other is via the double glass doors off of College Street, parking is available on College Street and materials will have to be carried up five steps.
- Main Street Landing cannot allow any pyro or blank ammo because their insurance rating will not allow it.
- Main Street Landing is a green company and we don't allow any toxic materials to be used in our building. Stage sets need to be painted off site – or painted with a No-VOC paint. Main Street Landing's Construction/Property Manager can advise as to what products are allowed.
- Please List the Theater in all Publicity as The Main Street Landing Black Box.
- Address is Sixty Lake Street, Burlington, Vermont 05401
- Main Street Landing requires proper training of all technicians before any in-house equipment can be used. Professionally trained technicians are available through private contract. Once you are trained you can use the control room without additional assistance for your next event.

MAIN STREET LANDING IS A SMOKE FREE ENVIRONMENT AND NO SMOKING IS PERMITTED ANYWHERE IN THE BUILDING OR 20 FEET FROM THE BUILDINGS.

Important Contact Information

Main Street Landing

- | | | |
|--------------------------------|--------------|--------------|
| ● Director of Performing Arts | Mariah Riggs | 802-540-3018 |
| ● Venue Operations Coordinator | Kyla Waldron | 802-318-3540 |
| ● Operations Associate | Leo Ashby | 802-316-6664 |

Private Contract Technical Assistance

Contact the Performing Arts Center Office for a list of our IATSE partners.

B. Stage Specifications

Theater size: 54'x38'8"

Crossover: 7'x30'

Grid height: 17'

Grid size: 41'x34' (see grid layout)

Projector screen 10'x18'

C. Soft Goods

2 - 16'x20' Velour Blacks (center split, on tracks)

6 - 16'3"x6' Velour Blacks

1 - 18'x30' Natural Muslin Cyclorama (on track)

D. Sound

- Allen & Heath 16 Channel Mix Wizard MZ w/6 aux sends
- Marantz CDR 510
- Panasonic DVD-RV31
- Onkyo Dual Cassette
- Shure DFR22 Processor
- Crown XLS 602 Amplifier
- 2-JBL Speakers permanently flown
- 2- Shure ULX Lapel (J1 554-590)

E. Dressing Rooms & Performer Support

- The Black Box Green Room consists of two chorus dressing rooms, one "star" dressing room, one production office, a green room area, and a shower.
- The chorus dressing rooms each have a full bathroom, three makeup mirrors with fluorescent lighting and costume racks, and an audio feed from the stage.
- The "star" dressing room can be locked and includes a makeup mirror with fluorescent lighting and a costume rack.
- The production office can be locked and includes a desk, make-up mirror, and a costume rack.
- The Green Room area includes a full standing fridge, sink, coffee maker, toaster oven, table with eight chairs, shower room, and an audio feed from the stage.
- **Main Street Landing is a smoke-free environment. No smoking is permitted anywhere in building or within 20 feet of the buildings.**

F. Electrical and Lighting

****ANY ELECTRICAL EQUIPMENT BROUGHT INTO MAIN STREET LANDING MUST MEET ALL CURRENT ELECTRICAL CODES****

Lighting Units

- 20-ETC Source Four 36 degree, 575 watt
- 5-Altman Fresnel 8in, 1000 watt
- 10-Altman Fresnel 6in, 500 watt
- 8 -ltman 6X9 500 watt
- 4-Altman 6x16 500 watt
- 4-Century 18in Scoop, 500 watt (House Light)
- (2) ETC SL1210B--12 channel, 10A dimmer pack
- (10) 50 degree ETC Source Four, 575w, stage pin
- (4) 26 degree ETC Source Four lens tubes
- (10) ETC Source Four Par 575w, stage pin (VN, N, M, W lenses)
- We do not stock color - please bring in

Dimming/Control

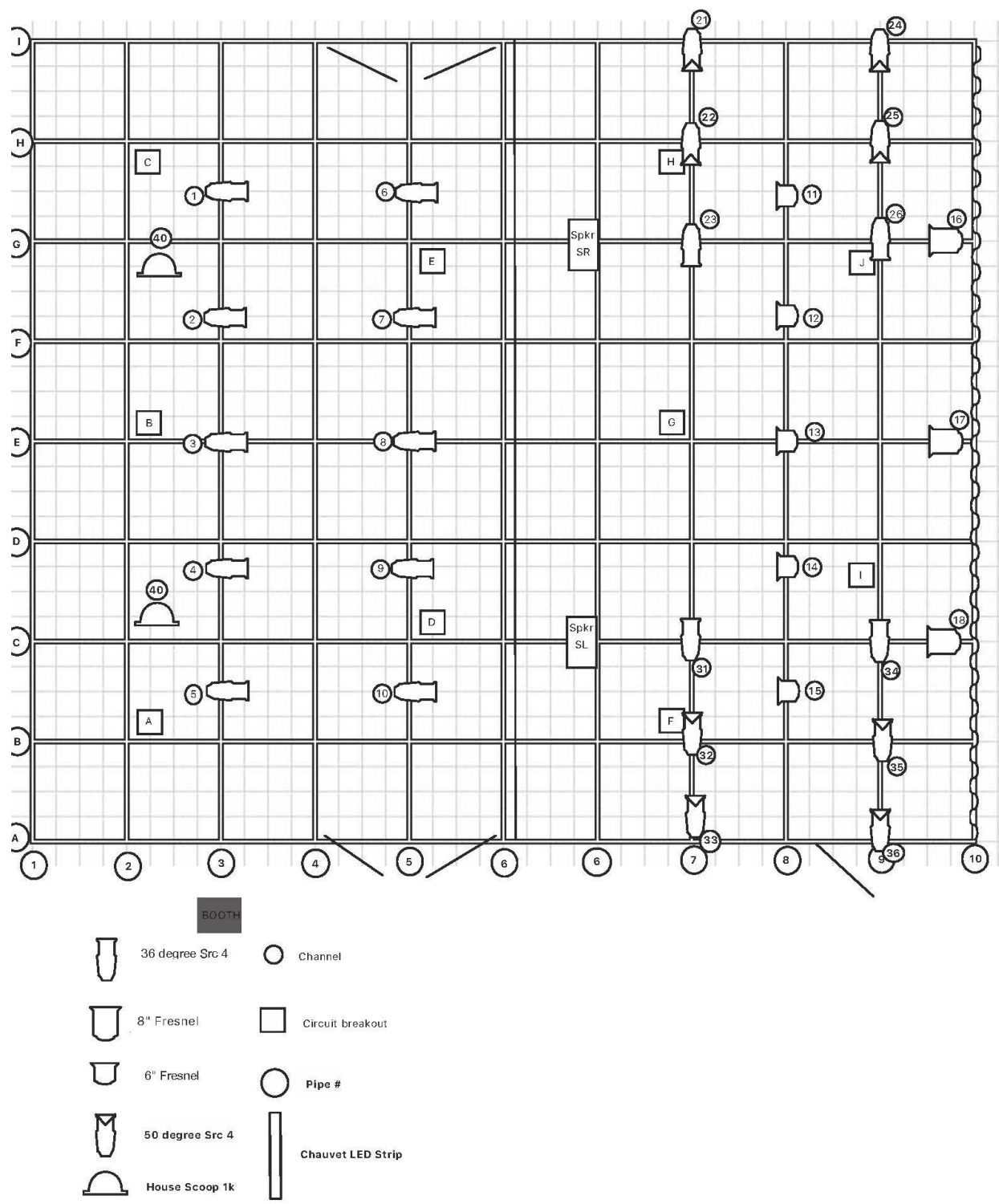
- Dove Lighting 6x2.4k Dimmer
- 1 -Dove Lighting 12x2.4k Dimmer
- 3 ETC Smartpack 12x1.2k Dimmer
- ETC Element 96 Channel Lighting Console
- House lights controlled by console via 2 dimmer channels.
- 12-5' 2P&G cables
- 12-10' 2P&G cables
- 12- 15' 2P&G cables
- 4- 25' 2P&G cables
- 4-50' 2P&G cables

Circuits/Grid

- Pipes are 4ft apart running north to south and east to west.
- All Stage circuits are 20 amp, 3 pin stage connectors (2P&G)

Note: Backstage lights are on Circuit 9 in the breaker box (labeled)

G.REP PLOT & GRID/CIRCUIT LAYOUT



Main Street Landing - Black Box Theatre REP PLOT

CHANNEL HOOKUP

<u>CHAN</u>	<u>ADDRESS</u>	<u>DIMMER PATCH</u>	<u>INSTRUMENT</u>	<u>NOTES</u>	<u>COLOR</u>
1	1		36 deg Src4	Front	R54
2	2		36 deg Src4	Front	R54
3	3		36 deg Src4	Front	R54
4	4		36 deg Src4	Front	R54
5	5		36 deg Src4	Front	R54
6	6		36 deg Src4	Front	R54
7	7		36 deg Src4	Front	R54
8	8		36 deg Src4	Front	R54
9	9		36 deg Src4	Front	R54
10	10		36 deg Src4	Front	R54
11	11		6" Fresnel	Back	
12	12		6" Fresnel	Back	
13	13		6" Fresnel	Back	
14	14		6" Fresnel	Back	
15	15		6" Fresnel	Back	
16	16		8" Fresnel	Back	
17	17		8" Fresnel	Back	
18	18		8" Fresnel	Back	
19	19				
20	20				

H. Sound and Lighting Instructions

Black Box Lighting and Sound Instructions

Updated as of 6/15/2022

Lighting

1. Go to the dimmer panel on the wall and turn on all of the dimmer groups that are marked with orange spike tape. You will hear the fans in the dimmer rack kick on.
2. Turn on the light board by pressing the power button in the top right corner.
3. Turn on both computer monitors.
4. If you are editing cues, ensure that the top center knob is set to the channel group you want to look at. For rep plot configuration, this will be Channels 1-40.

To write cues...

1. On the monitor to the right of the board, go into the menu and create a new show. Make sure you are not recording new cues in a pre-existing show!!!
2. Bring up the lights as you want them to look in the cue.
3. Hit "Record cue" and the board will create a cue. Manually adjust the number by clicking on the numbers down the left column and typing over them if need be.
4. To run cues during the show:
 - a. Navigate to your show in the menu and open it.
 - b. Make sure any work lights in the house are flipped off.
 - c. Click on your first cue, and then hit the large GO button on the board. The lights should automatically shift to this cue.
 - d. The next cue will automatically be ready the next time you hit GO.

Sound

1. Hit the master power switch marked on the sound rack.
2. Ensure that the sliders on Channel 11 and 12 are set at 0 and that the channels are not muted.
3. Plug in the device you are running sound through via the 1/8" cord.
4. Ensure your device's volume output never goes higher than three notches below full blast in order to avoid blowing out a speaker.
5. To adjust volume, you can either adjust it on the device playing music, the Channel 11 and 12 phasers, or the cueing software.

Questions? Concerns?

Kyla Waldron (Weekdays) | Venue Operations Coordinator | (802) 318-3540

Leo Ashby (Weekends) | Operations Associate | (802) 316-6664